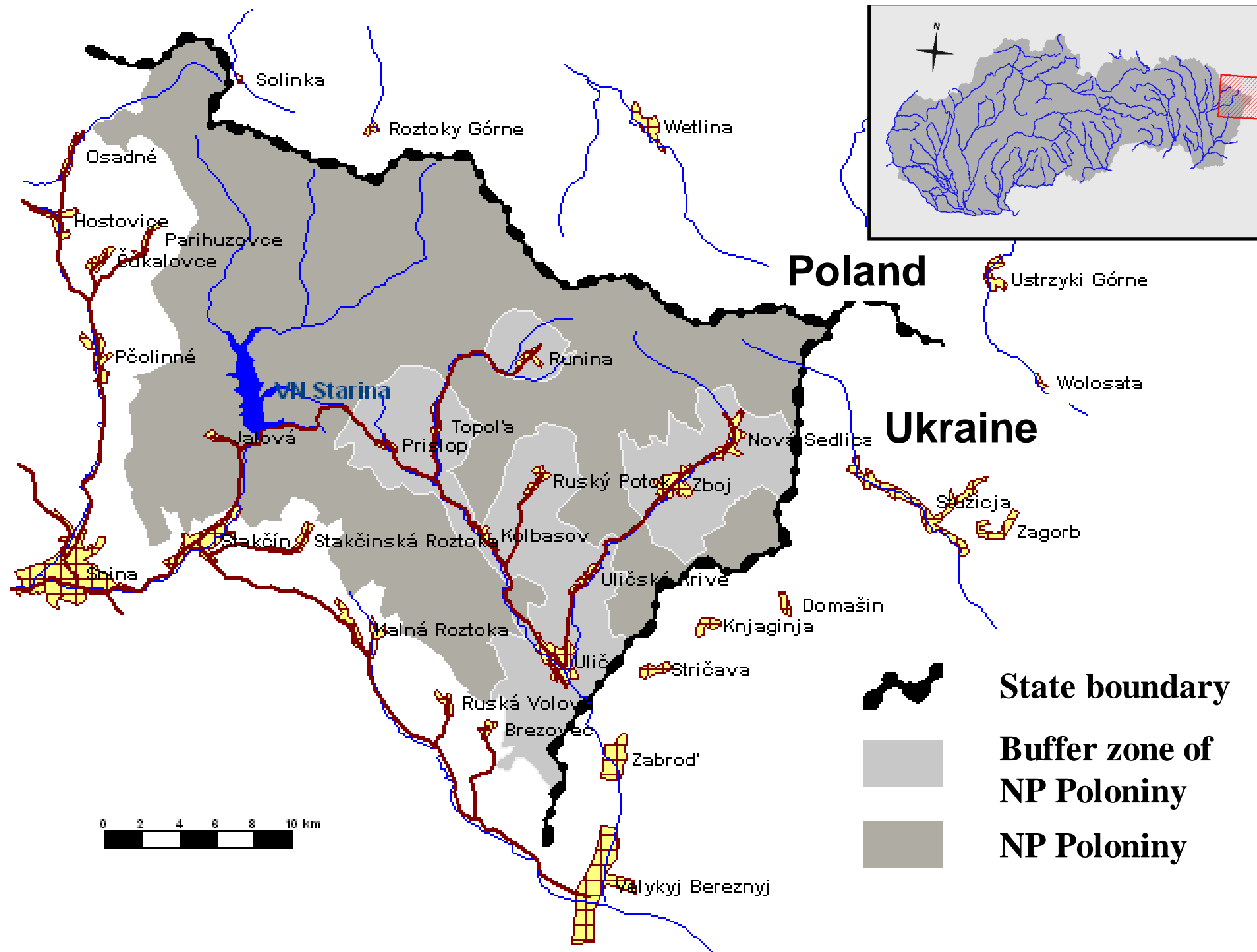


# Brown Bear (*Ursus arctos* L.) in NP Poloniny



Jozef Štofík, Martin Straka, Ľadislav Paule,  
Miroslav Saniga, Ľadislav Molnár, Peter Major

Wojciech Juda Balnica



## **Our research´ve fucused on:**

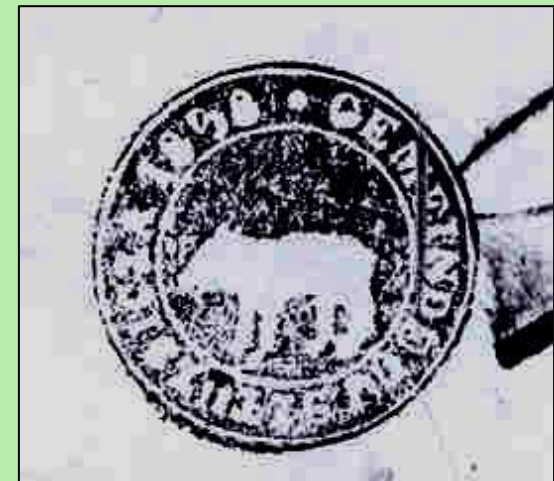
- 1. to collect and evalute historical data**
- 2. to estimate present state of population of brown bear  
(numbers, population age and sex structure)**
- 3. parasitologically research**
- 4. to describe its spatial activity**
- 5. to analyse feeding ecology**
- 6. to evaluate record of presence**



# 1 Evaluation of historical data

- **1565** First information about bears from village Solinka SK-PL state boundary (KRYCIŃSKI, 1996)
- **1732** Matej BEL described people from the village Strihovec as a good hunters of bears.

**The seal of village Runina from 1837.**



**The seal of Ukrainian village Stužica from 1858.**

## **2 Current status of the bear population**

**Up to the present information are deduced on the basis of scientific estimation, which is provided by Poloniny National Park**

**Administration – the estimation of the population number is 18 individuals.**

**Our information are deduced on the basis of:**

- **DNA analysis.**
- **Spatial activity by comparison with DNA samples.**

## **2 Current status of the bear population**

**DNA samples were evaluated by :**

**Mgr. Straka M. with prof. Ing. Pauleho L. PhD.**

**Technical University in Zvolen**

**Faculty of Forestry**

**The research was funded by Agency for Support of Research and Development through financial support no. APVV-18-032105 from the project called „Genetic diversity and differentiation of game and protected species.“**

## **2 Current status of the bear population**

**We've started to increase intensity of monitoring of state of the population of brown bear in Poloniny NP from 2007 to 2009:**

- We created a monitoring form, which was distributed between professional engaged groups – foresters, hunters, frontiersmen, volunteers and interested local people.**
- Simultaneously experts from Poloniny NP Administration made monitoring of brown bear.**

## **2 Current status of the bear population**

- **The next phase was collecting of scat samples and hair samples in terrain, which have started in october 2008.**
- **The scat and hair samples were used for identification of individuals on the basis of DNA analysis.**
- **All those data were recorded by GPS and later digitalised.**



## **2 Current status of the bear population**

**We' ve inferred **15** different individuals of bear on the basis of DNA samples in the study area. This is a minimal number of individuals, we expect increase of that number, because:**

- We certainly didn't collect all samples from each bear in the study area.**
- The samples were collected in very short term (October 2008 - April 2009).**
- On the basis of spatial activity we can deduce, that we didn't find coprological material from some individuals.**
- And also some samples are still waiting for evaluation.**

## 2 Current status of the bear population

### Results from DNA:

**6** females

- 2 - females with cubs - locality of occurrence (L.of O.) Ruské, Stakčín
- 1 cub

**9** males

- 3 cubs
- 4 territory males probably



### Results from spatial activity:

**2** females with cubs

- 1 L. of O. Zboj
- 1 L. of O. Osadné

**2** males

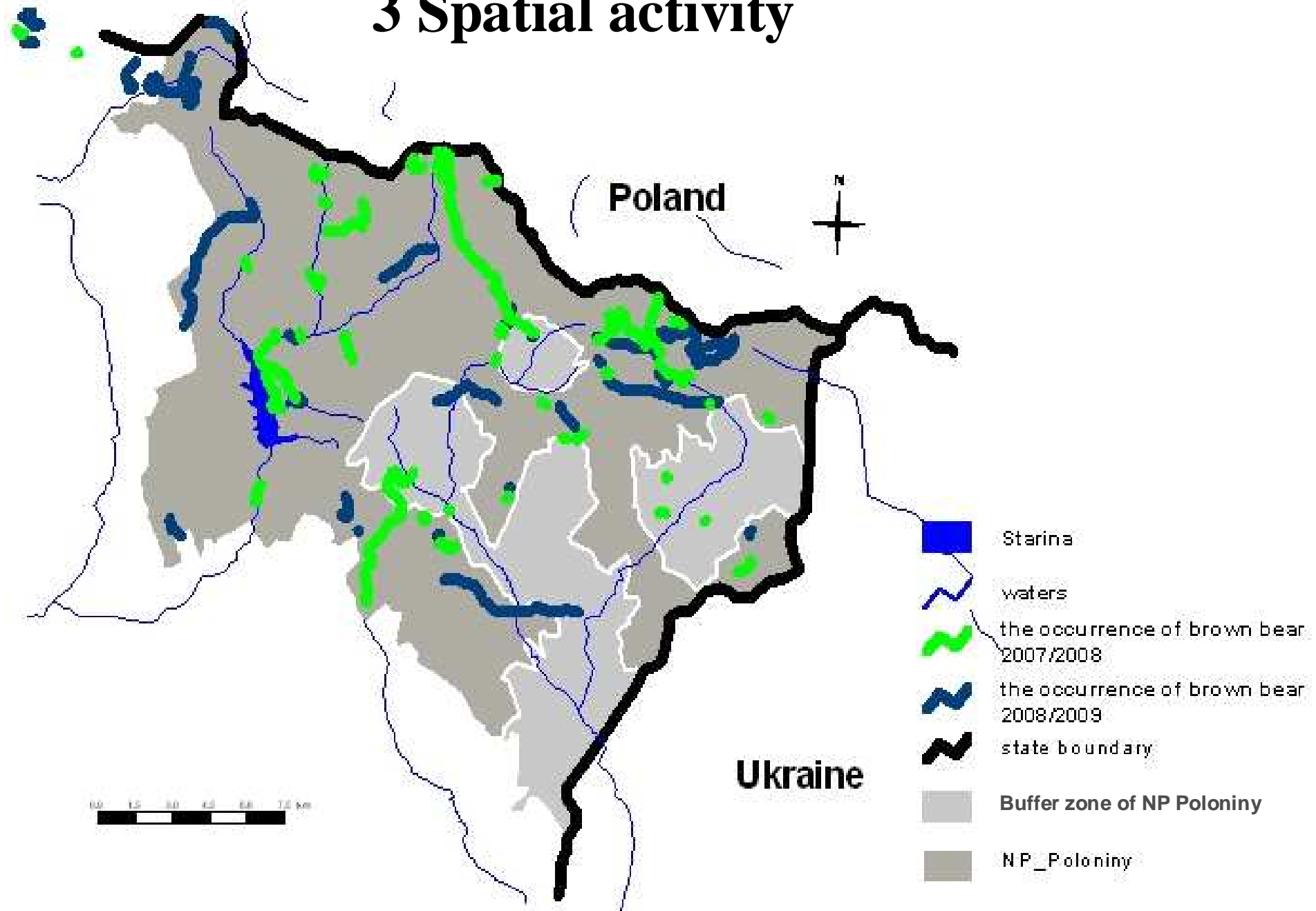
- 1 L. of O. Zboj?
- 1 L. of O. Osadné

**6** cubs

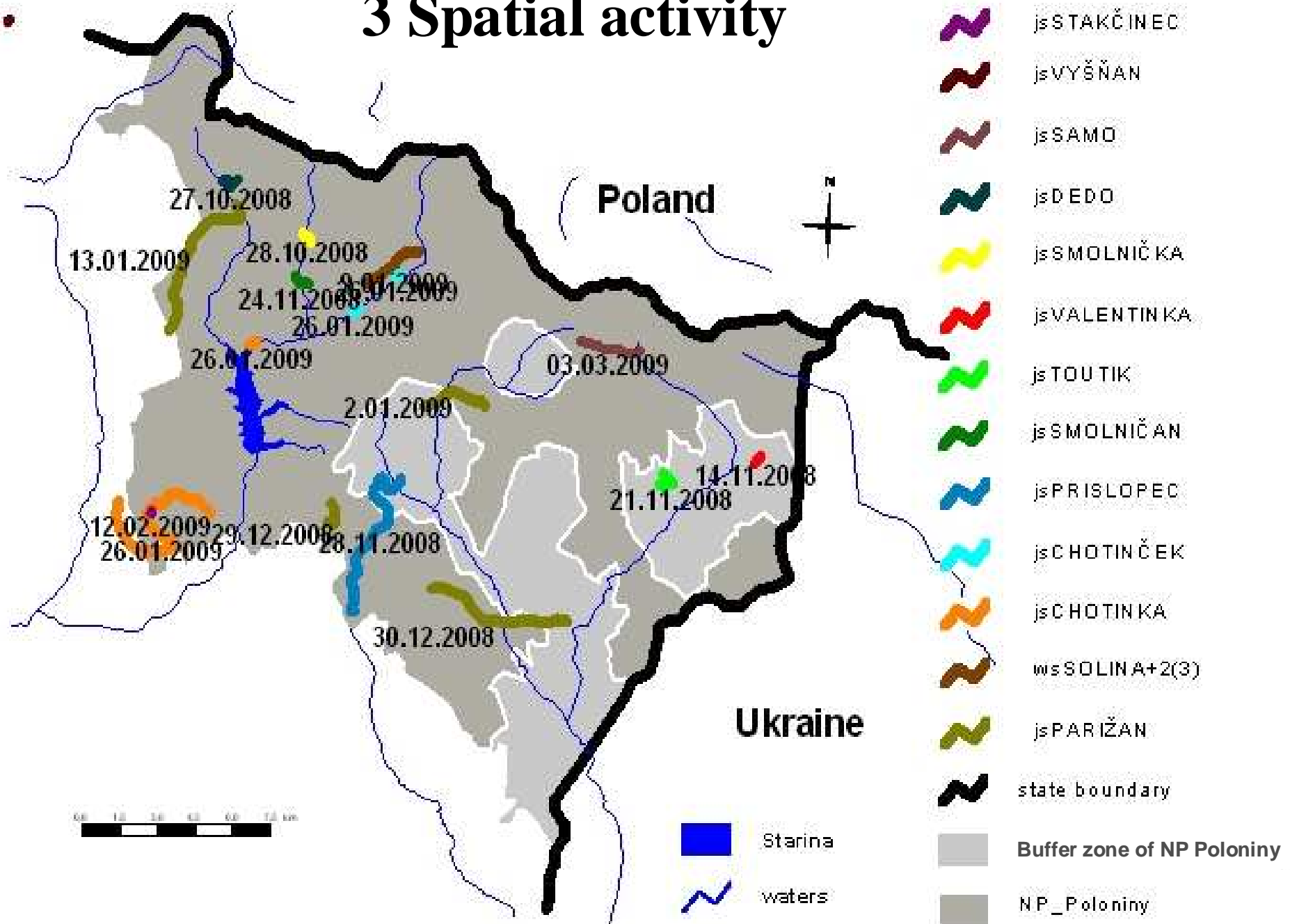
- 1 L. of O. Zboj
- 2 L.O. Zboj (date of birth 2009)
- 1 L. of O. Runina
- 2 L. of O. Osadné

Summary minimum **25** different individuals  
of bears are presented in Poloniny NP.

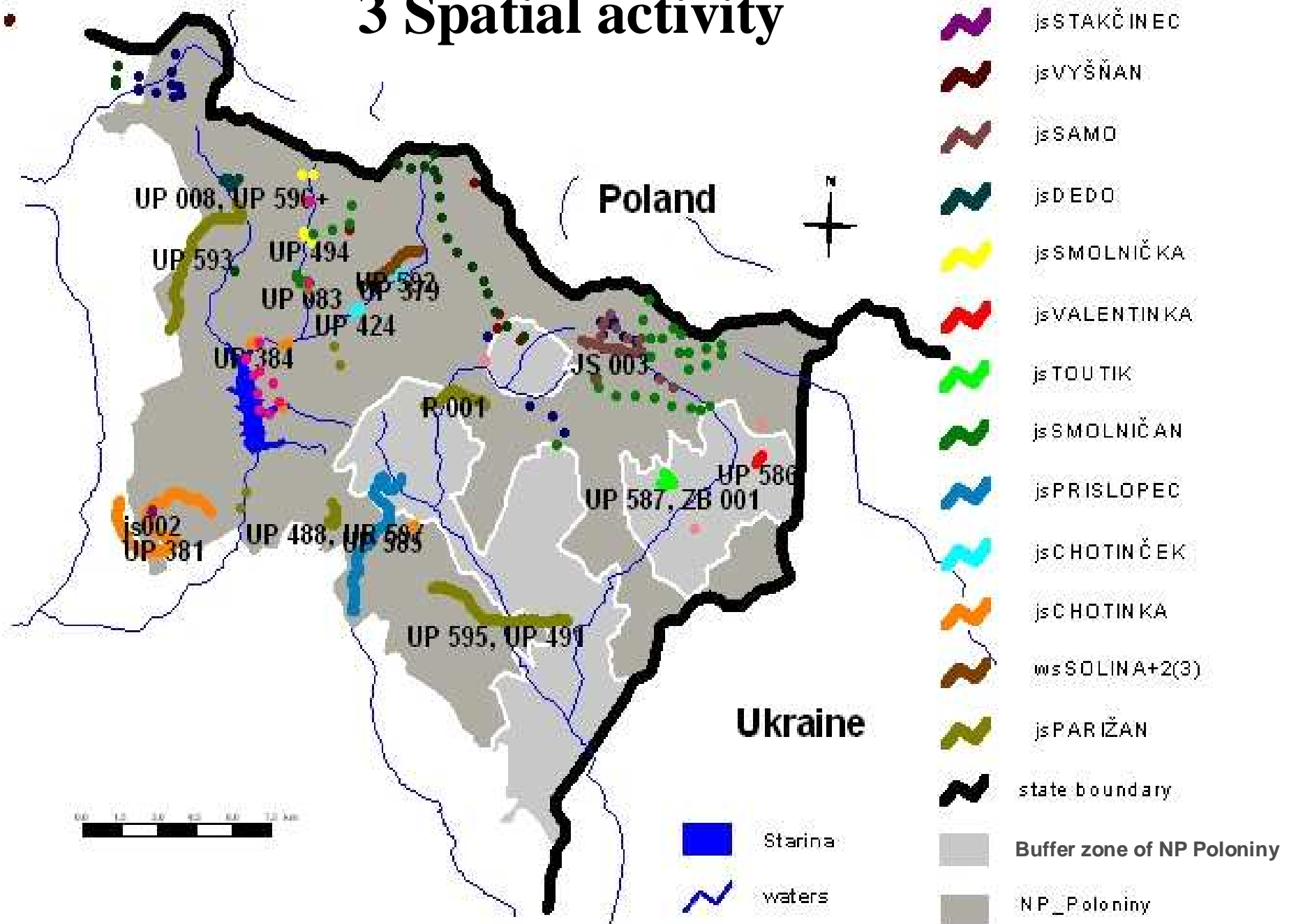
### 3 Spatial activity



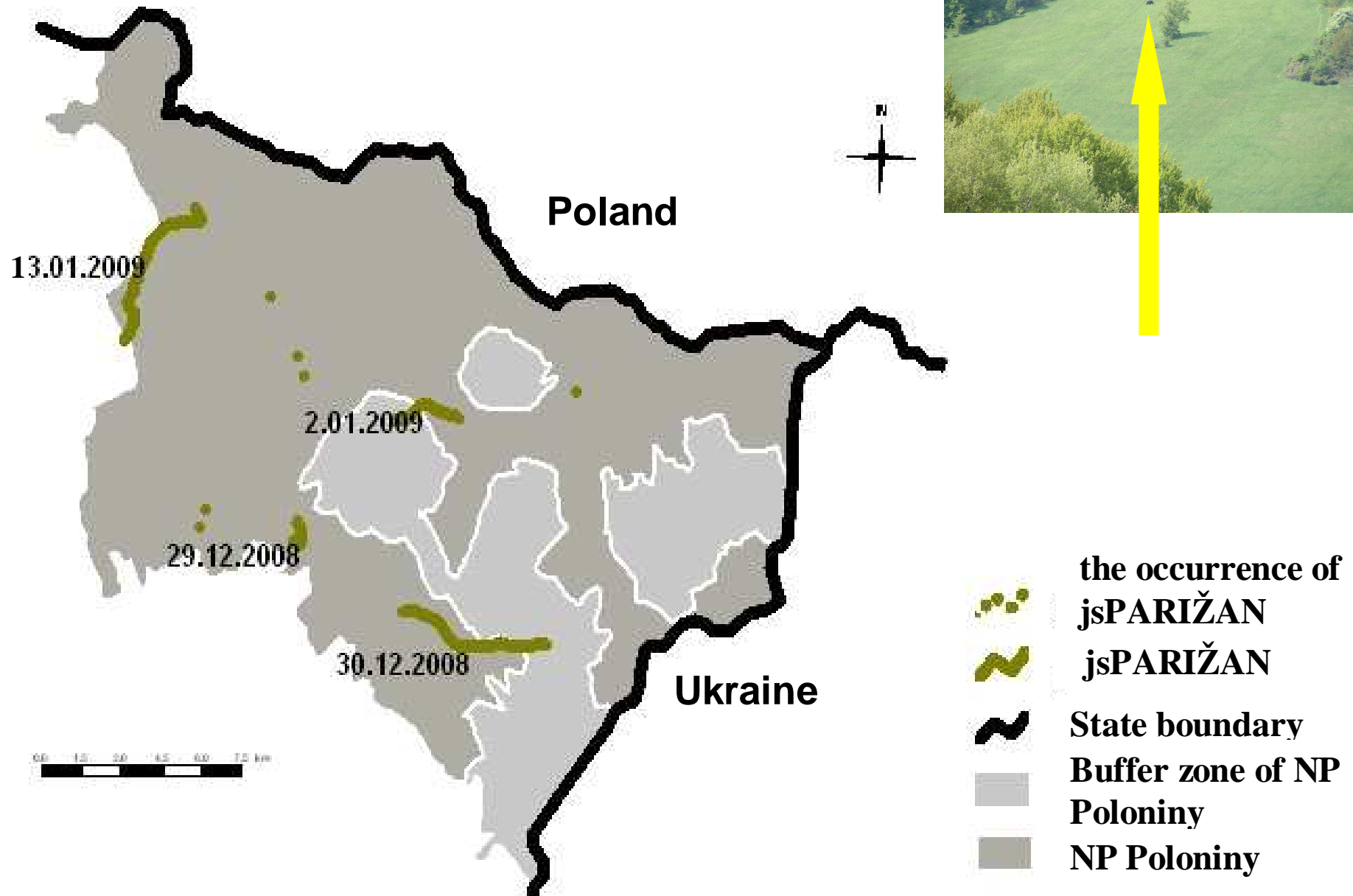
### 3 Spatial activity



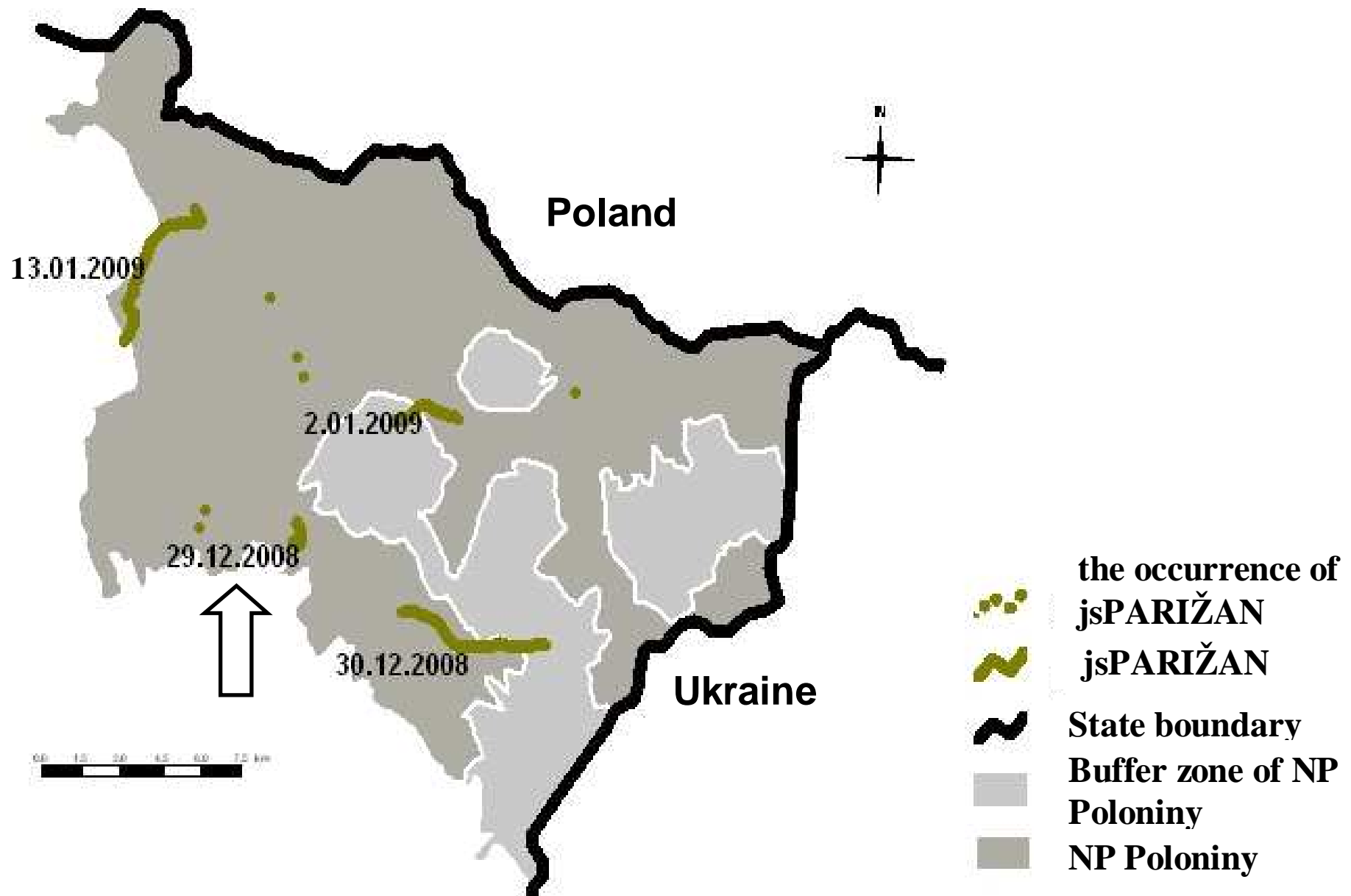
### 3 Spatial activity



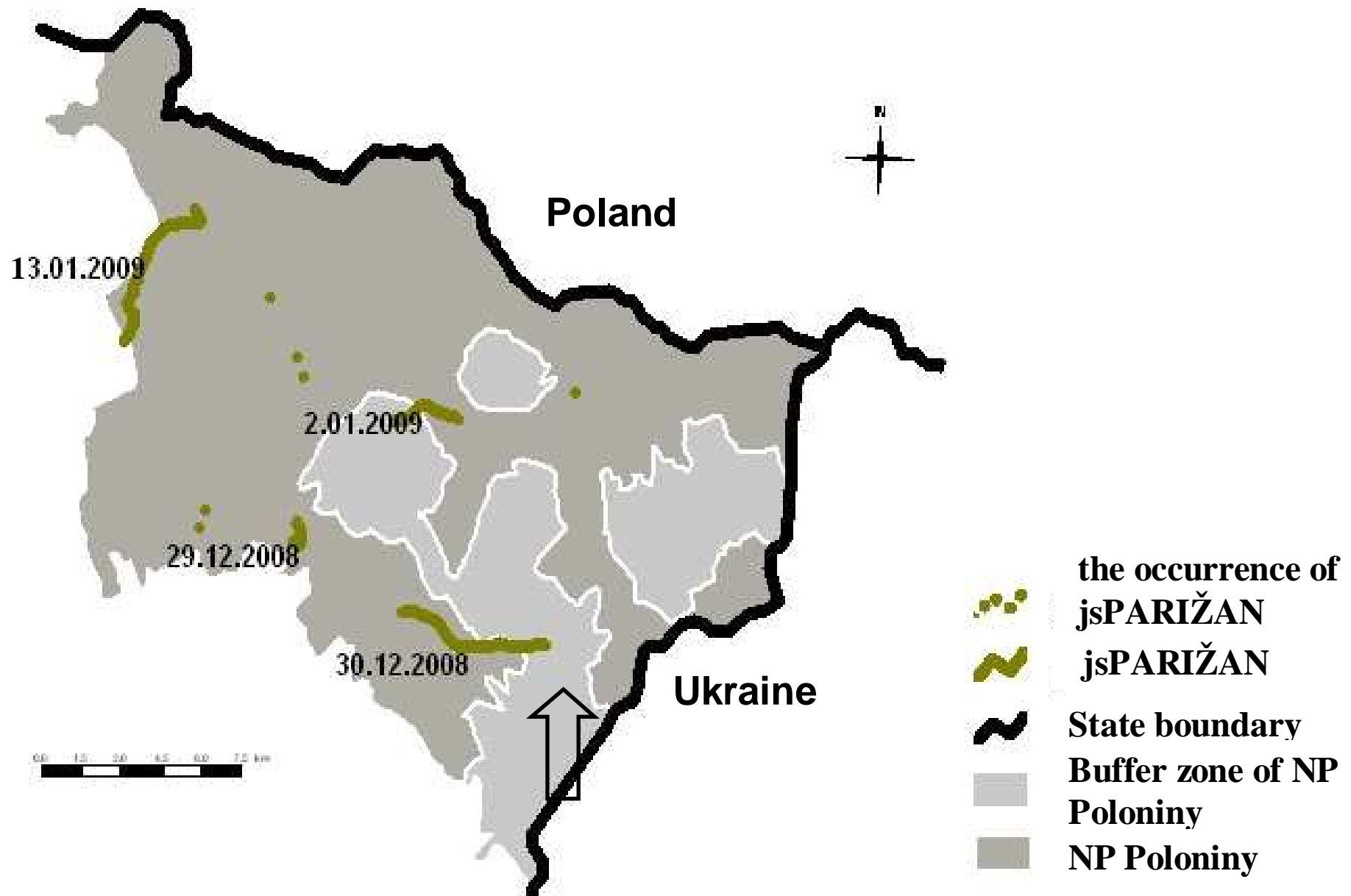
### 3 Spatial activity



### 3 Spatial activity

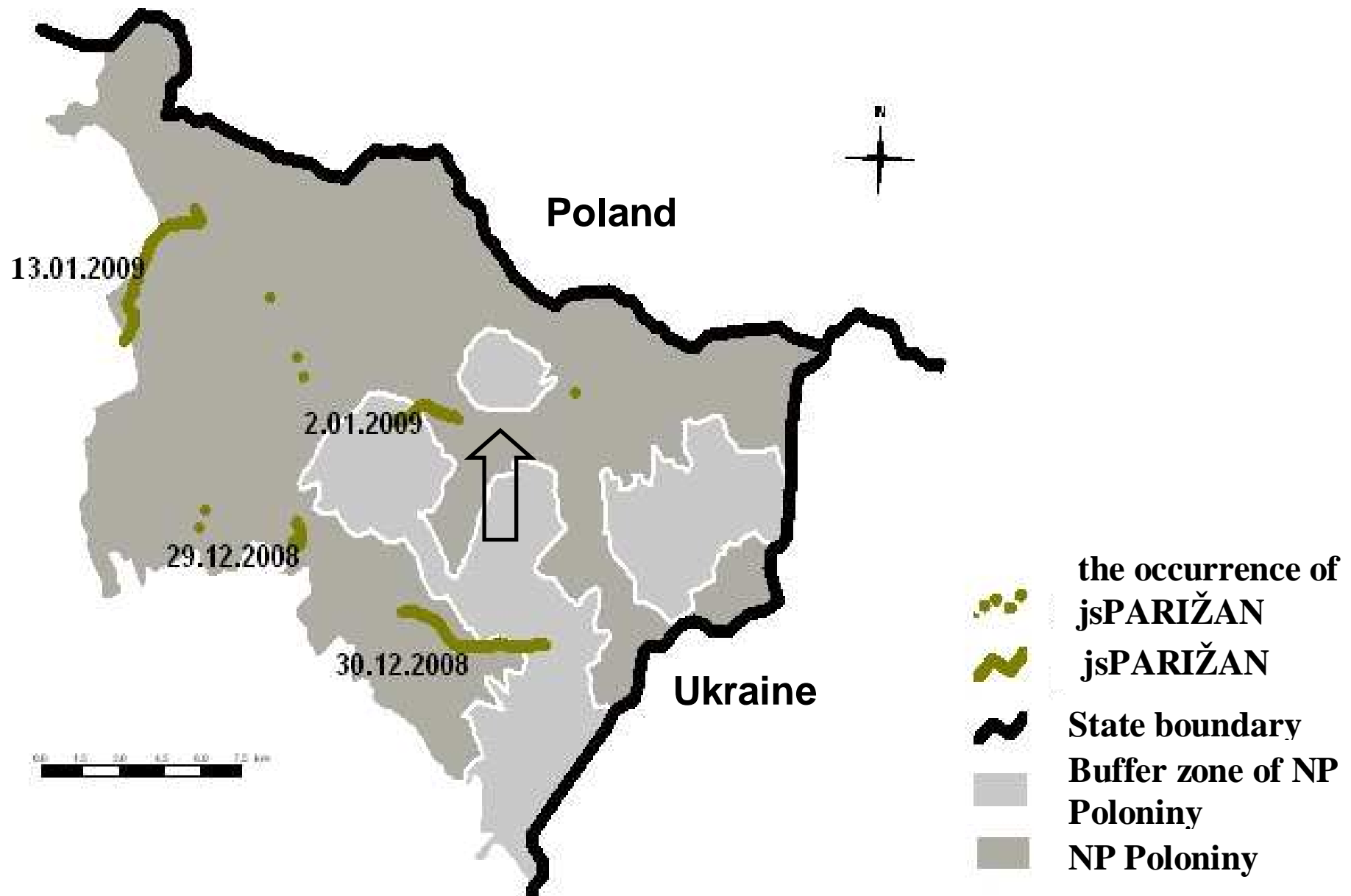


### 3 Spatial activity

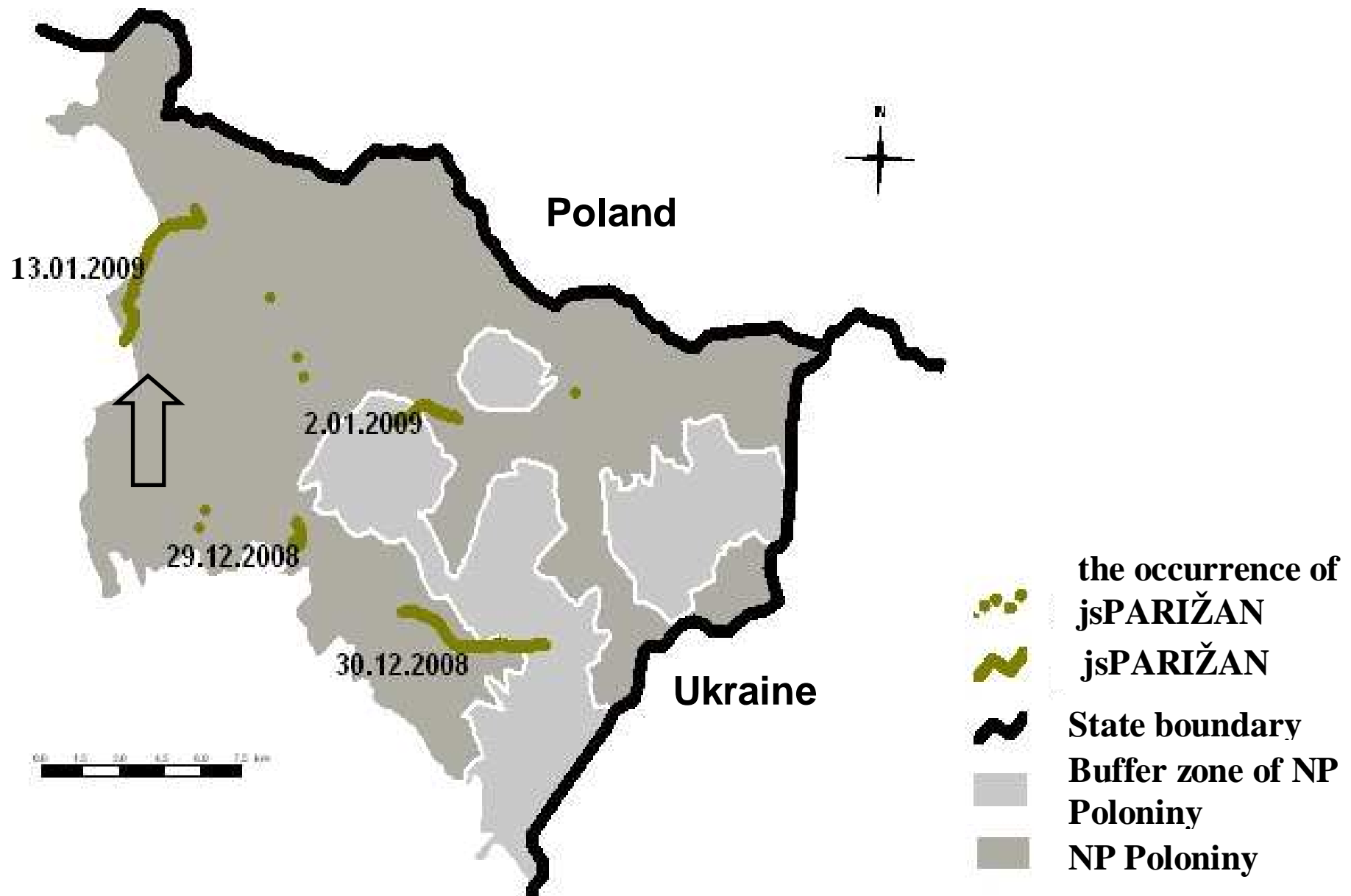




### 3 Spatial activity








### 3 Spatial activity



### 3 Spatial activity

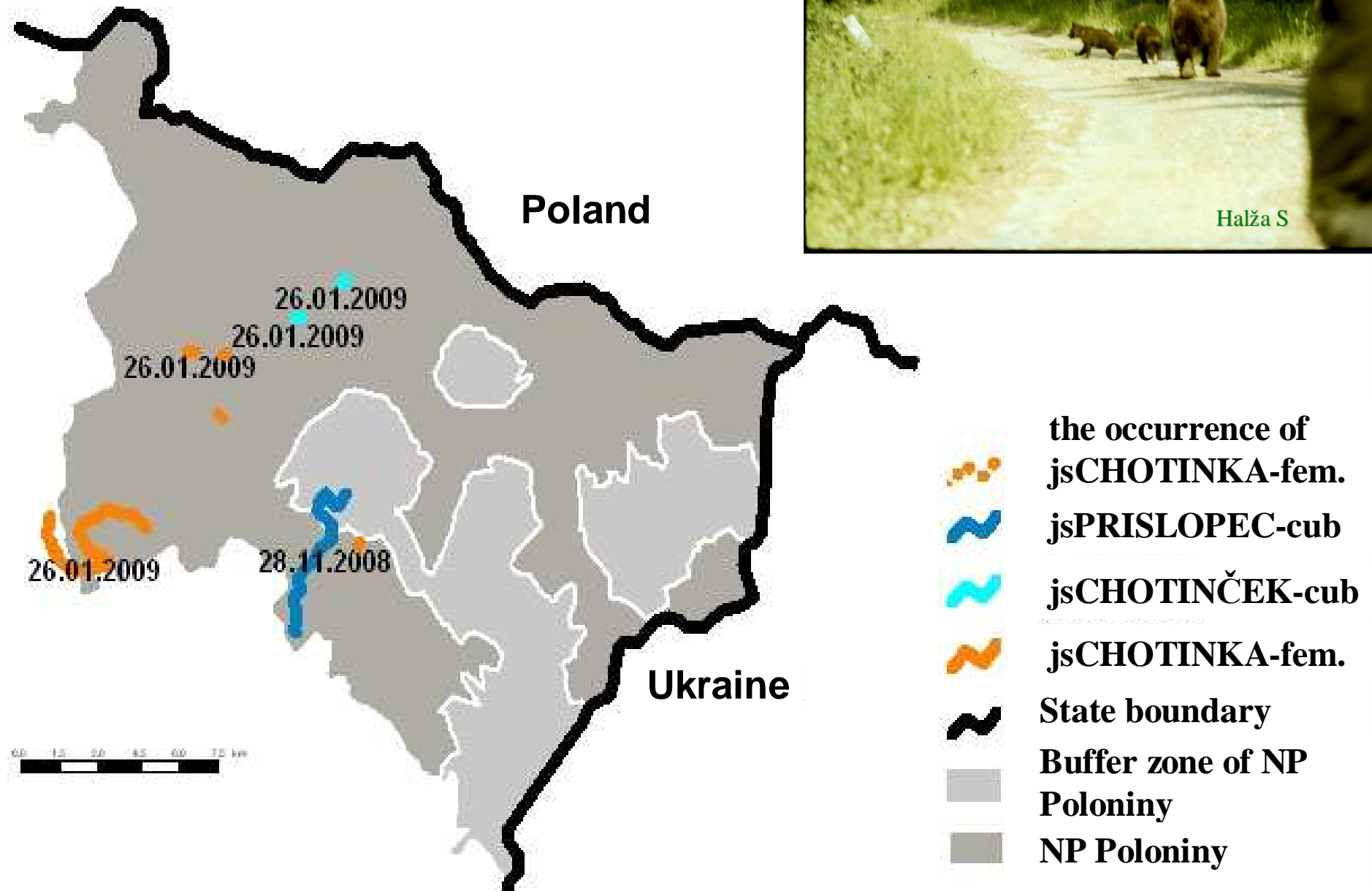


-  the occurrence of jsDEDO
-  jsDEDO
-  State boundary
-  Buffer zone of NP Poloniny
-  NP Poloniny

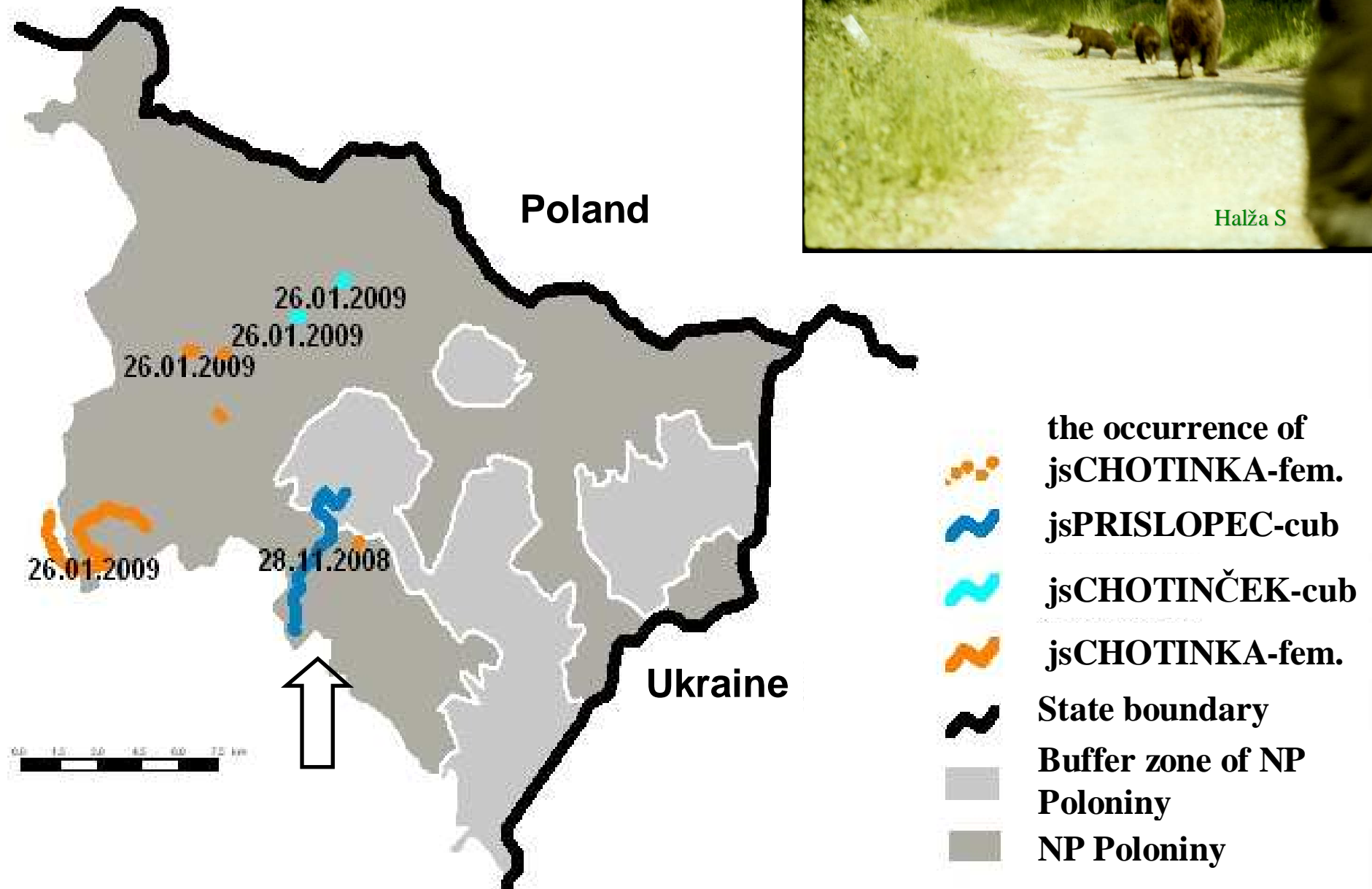
### 3 Spatial activity



### 3 Spatial activity



### 3 Spatial activity

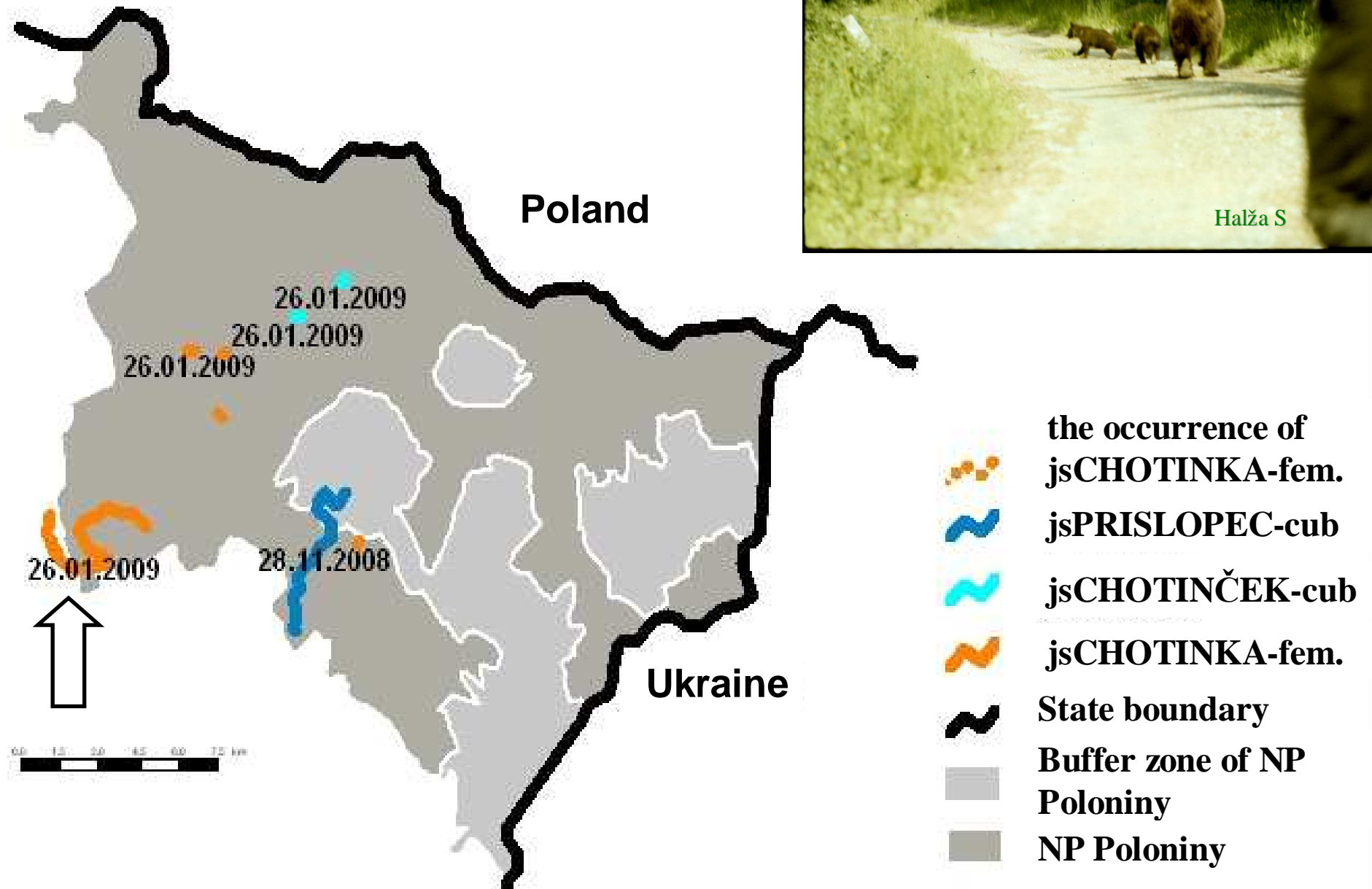


### 3 Spatial activity



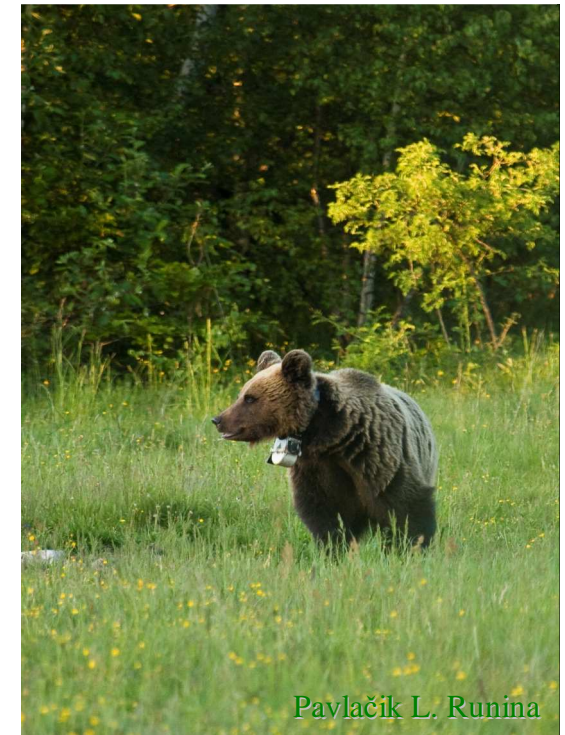


### 3 Spatial activity










### 3 Spatial activity



Pavlačík L. Runina

-  the occurrence of SOLINA with 3 cubs
-  SOLINA with 3 cubs
-  State boundary
-  Buffer zone of NP Poloniny
-  NP Poloniny

## **4 Parasitology research**

**Analyses of scat samples were made by**

**University of veterinary medicine in Košice**

**Institute of Parasitology**

**MVDr. Major P.**

**MVDr. Molnár L.**

**4 Parasitology research**

Map showing the distribution of helminth species in bear excrement (2008 and 2009) in the area around NP Poloniny, Ukraine. The map includes the state boundary, the Buffer zone of NP Poloniny, and the NP Poloniny itself. The legend identifies symbols for Starina, waters, excrement of bears 2008, excrement of bears 2009, state boundary, Buffer zone of NP Poloniny, and NP Poloniny. A scale bar and a north arrow are also present.

**Legend:**

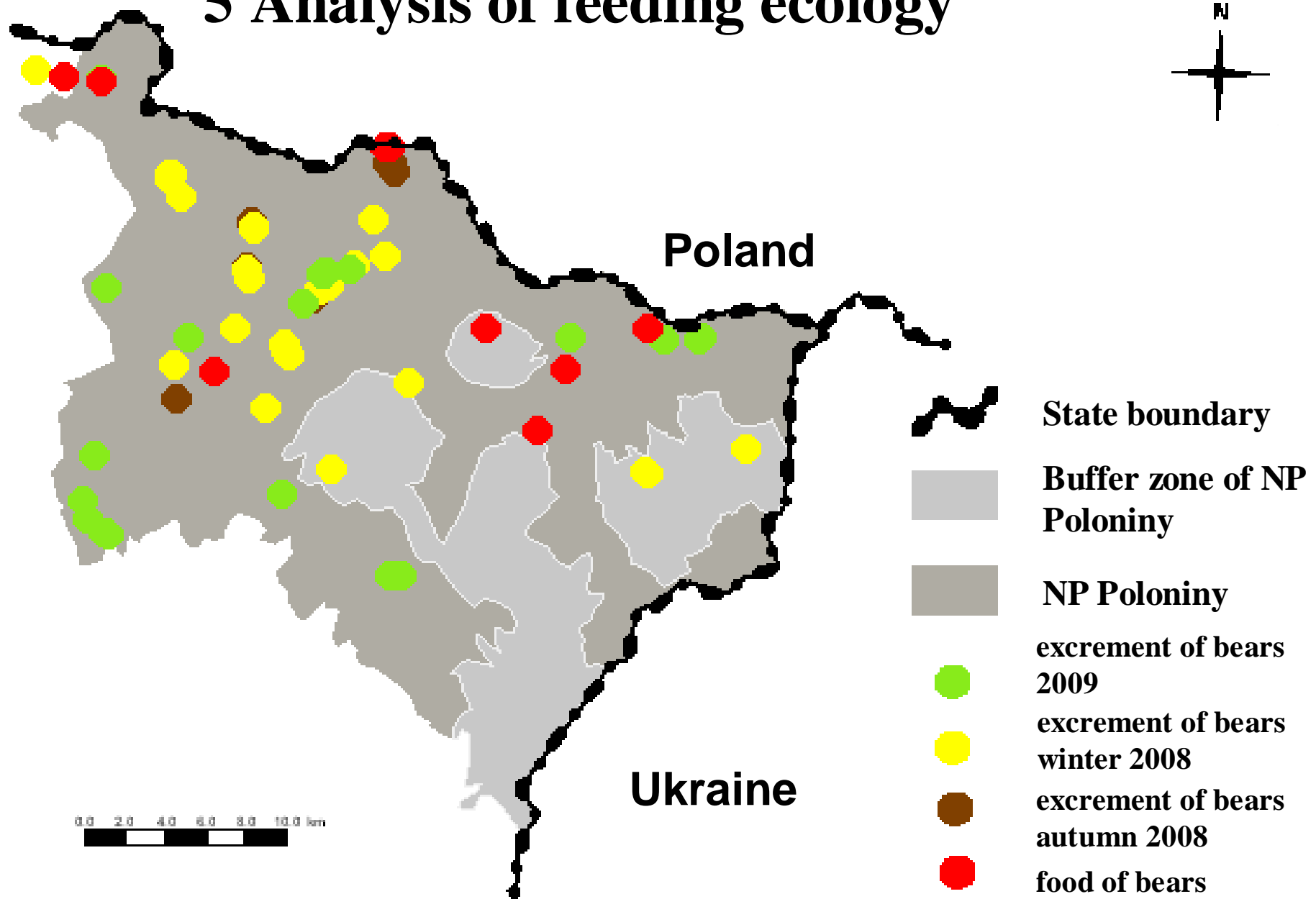
- Starina
- waters
- excrement of bears 2008
- excrement of bears 2009
- state boundary
- Buffer zone of NP Poloniny
- NP Poloniny

**Species and Prevalence:**

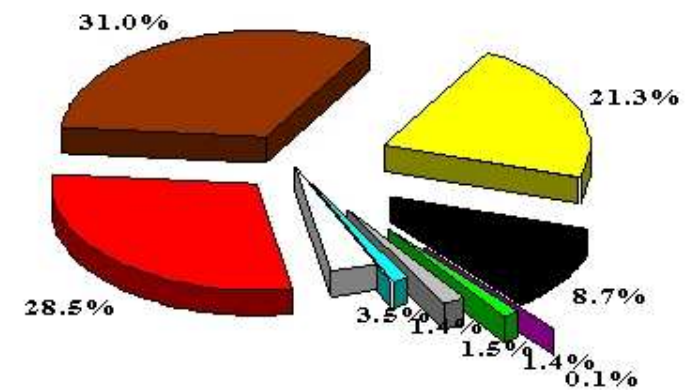
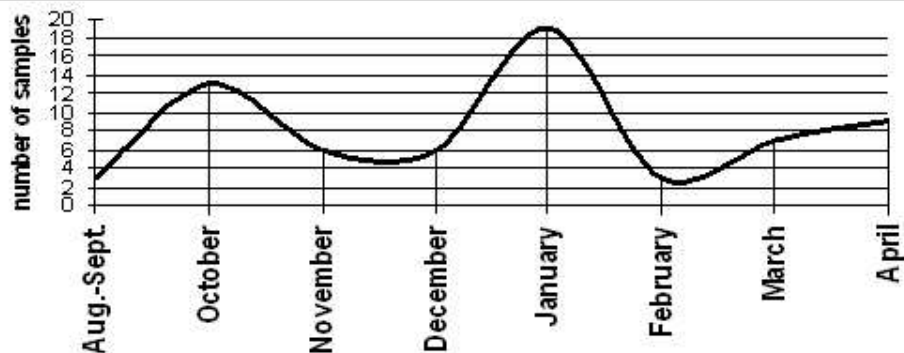
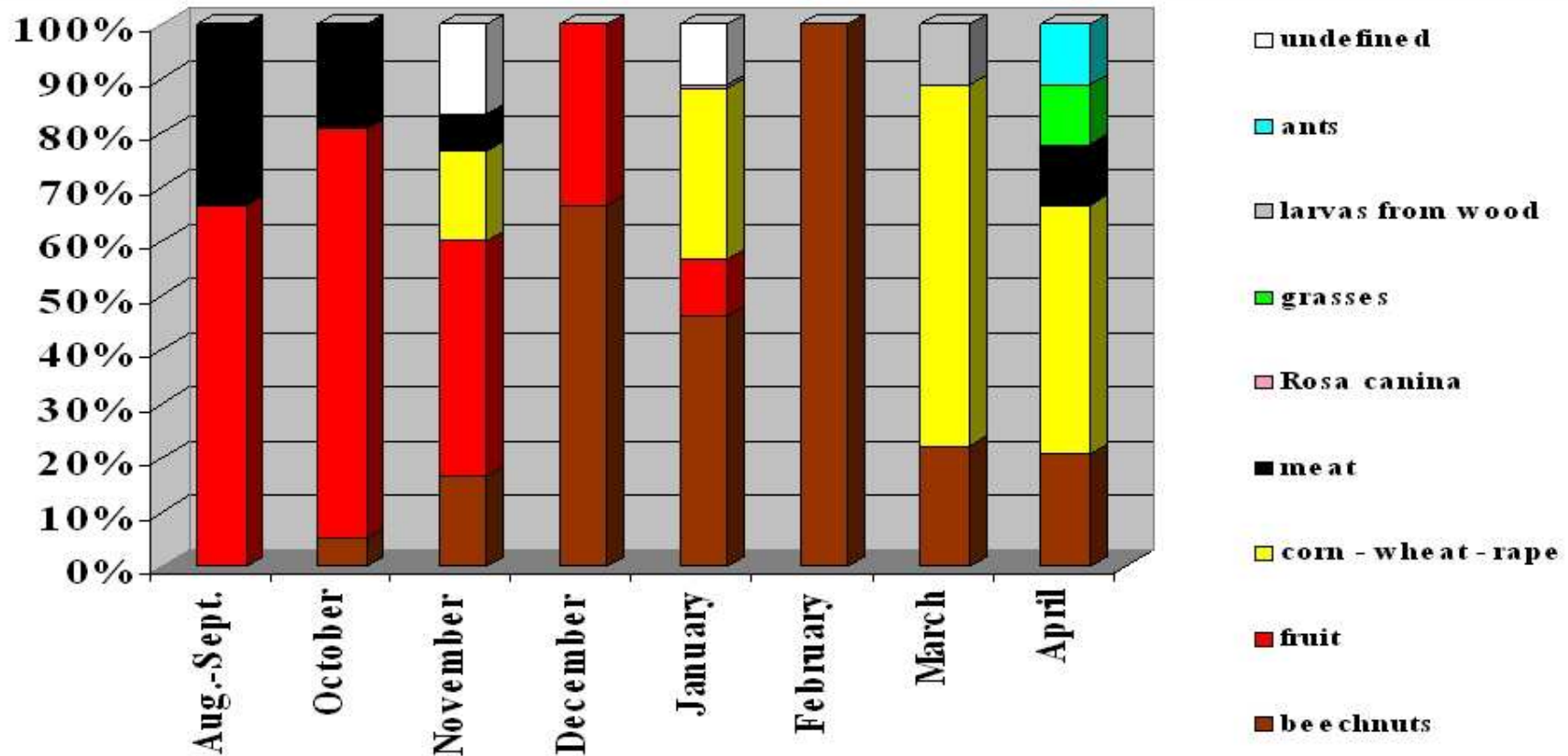
Species	Prevalence (%)
<i>Ba. tr.</i> - <i>Baylisascaris transfuga</i>	63,82%
<i>Tr. vu.</i> - <i>Trichuris vulpis</i>	14,89%
<i>Cr. spp.</i> - <i>Cryptosporidium spp.</i>	12,76%
<i>An. spp.</i> - <i>Ancylostoma spp.</i>	4,25%

Ba. tr.	-Baylisascaris transfuga	-63,82%
Tr.vu.	-Trichuris vulpis	-14,89%
Cr.spp.	-Cryptosporidium spp.	-12,76%
An.spp.	-Ancylostoma spp.	-4,25%

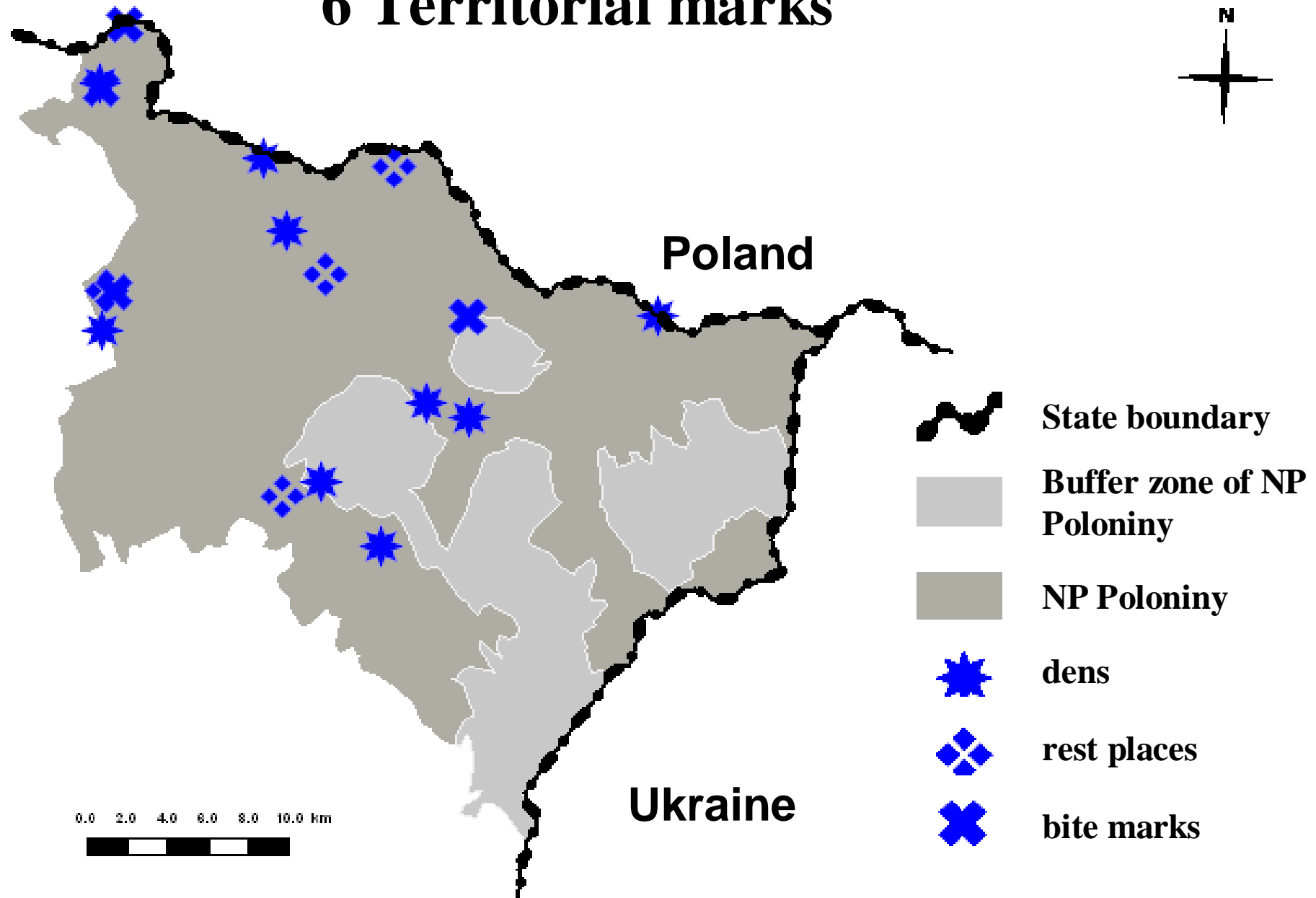
## 5 Analysis of feeding ecology



## 5 Analysis of feeding ecology



# 6 Territorial marks







**bite marks**



**bite marks**



**den**



**den**







The image is a collage of six photographs showing a snowy forest floor. The central, largest photograph shows a dense thicket of dry, brown grass and twigs protruding from a layer of white snow. Surrounding this central image are five smaller photographs: top-left shows a mossy log in the snow; top-right shows a tree trunk with snow on its bark; bottom-left shows bare tree branches in the snow; bottom-center shows a patch of snow with some green moss; and bottom-right shows a tree trunk next to a small evergreen tree. The text "Thank you for your attention" is overlaid in yellow on the central photograph.

**Thank you for your attention**