



Recreational activities in the Protected Areas of Ossola: monitoring and management

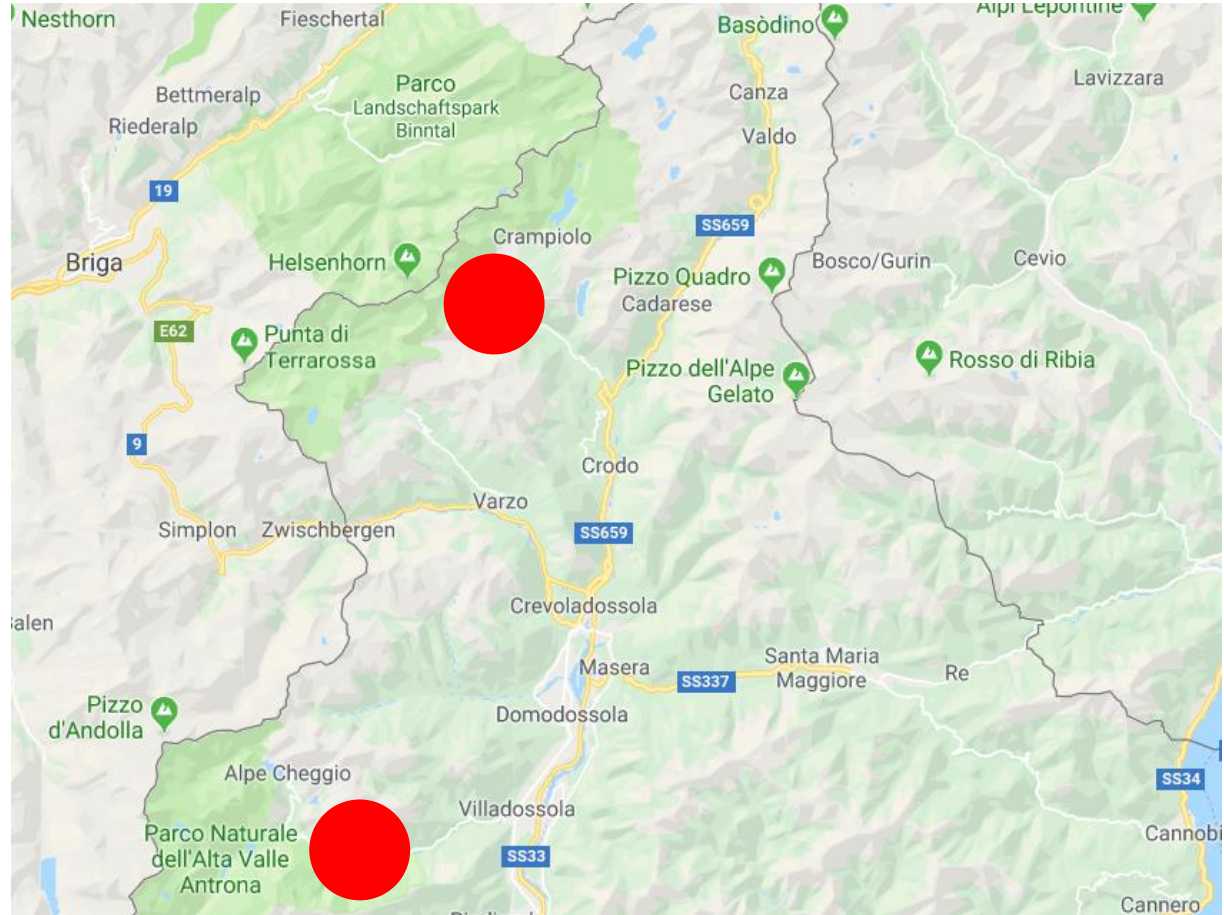


*Daniele Piazza, Director
Ente di gestione delle Aree Protette dell'Ossola*



Nature Parks
Alpe Veglia e Alpe Devero
Alta Valle Antrona

Natura 2000 Sites
SAC/SPA IT1140016
«Alpi Veglia e Devero – Monte Giove»
SPA IT1140018
«Alte Valli Anzasca, Antrona e Bognanco»





Facts

Throughout the Alps, trends in tourism and outdoor practices have significantly increased the number of visitors accessing protected areas.

Opportunities for local tourism development, but also an increase in the impact of these activities on wildlife and ecosystems.

The COVID-19 crisis has increased people's interest in outdoor activities.

27'

Danilo Re

2023 | COGNE - GRAN PARADISO NATIONAL PARK



Home > Natura e ricerca > Progetti in corso > Resicets > In Inverno

In Inverno

RESICETS

Muoversi consapevolmente

Azioni

In Inverno

In Estate

Be Part of the Mountain

Materiali e download



Fascino, divertimento e..vita grama!

L'inverno è una stagione affascinante per frequentare la montagna: paesaggi fantastici, panorami mozzafiato e divertimento sulla neve. E gli animali? Alcuni decidono di restare in montagna durante la stagione invernale con il letargo; altri migrano solo temporaneamente - verso climi più miti - altri ancora vanno in letargo - quelli che svernano a media - alta quota - senza andare in letargo - si spostano in zone più basse. Le valanghe e le slavine coinvolgono anche gli animali, oltre a rappresentare un rischio per la loro sopravvivenza. In inverno, il vento e la neve possono coprire le piste e rendere difficile la risalita. Nonostante il freddo, il vento e la neve possono coprire le piste e rendere difficile la risalita.

WeWild project: The Initiative grows through two further workshops in France and Italy

Marsiglia, 13 Novembre 2022

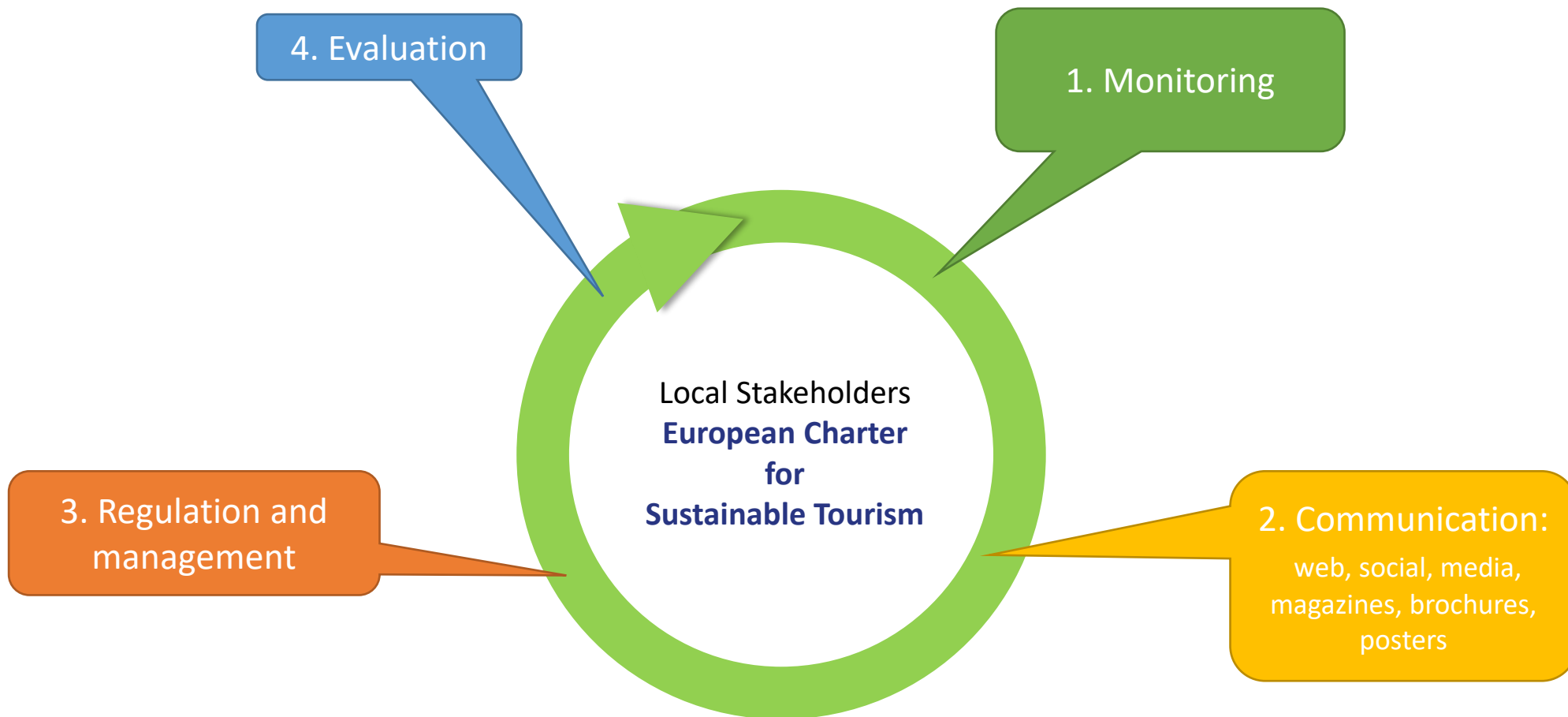


parcs of Auvergne-Rhône-Alpes

After a first workshop in Vorarlberg last May, ALPARC has recently organised two further workshops in Les Ecrins National Park (France) and in the nature parks of the Ossola Valleys (Italy) in the frame of the WeWild project. The aim of the project and its growing development is the development of a joint communication initiative to reduce wildlife disturbance in the Alps in winter. The numerous participants learned about the project's progress, gave feedback and were involved in the further development of this joint initiative.

In the French Alps, several ongoing projects aim at tackling the manufacture conflicts in outdoor sports. The workshop in Le Bourg d'Oisans, (Les Ecrins National Park, 21st-September 2022), specifically dedicated to recreational impacts in winter, helped to extend the working group in the French Alps and from smaller protected areas (e.g. NATURA 2000 managed in the present context of joint projects, in which many stakeholders are involved: the Biodiv'Sports "Awareness Raising via Participation and Mapping" project (lead partner LPO (laëre)) and the film series project of the Regional Nature





Monitoring of tourism 2018 - 2019

Winter & Summer

552 questionnaires collected summer 2018;

262 questionnaires collected winter/spring
2018 - 2018

Population=250.000, Confidence level=95%, Confidence
interval=5%, Sample size=384

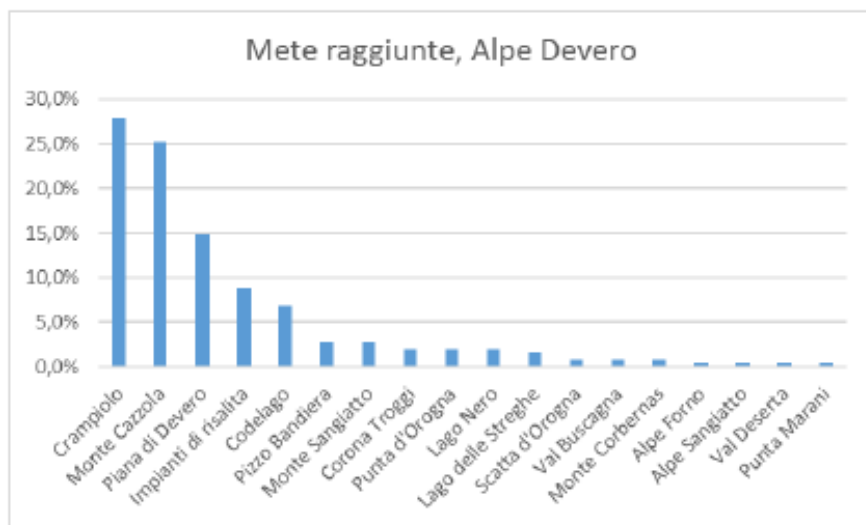
Località	Mese	N° auto
Alpe Devero	Novembre 2018	1.590
	Dicembre 2018	5.077
	Gennaio 2019	5.721
	Febbraio 2019	5.298
	Marzo 2019	5.296
	Aprile 2019	2.221
	Maggio 2019	1.384
Totale auto Alpe Devero		26.587
Totale auto complessivo		26.587

Tab. 2 – conteggio delle presenze auto nel periodo novembre 2018 – maggio 2019 presso i parcheggi dell'Alpe Devero e dell'Alpe Veglia

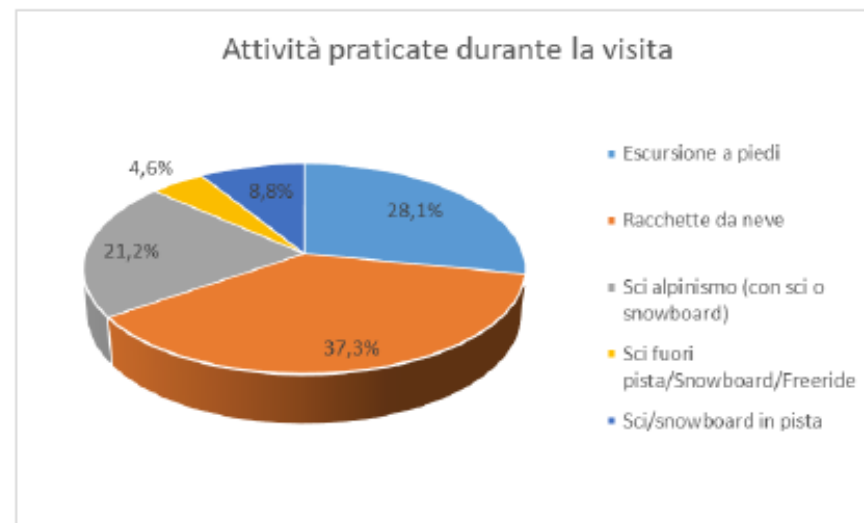
Località	Mese	N° auto
Alpe Devero	Giugno	6.246
	Luglio	9.762
	Agosto	12.458
	Settembre	7.079
	Ottobre	4.163
Totale auto Alpe Devero		39.708
Alpe Veglia	Giugno	600
	Luglio	1.400
	Agosto	1.900
	Settembre	650
	Ottobre	250
Totale auto Alpe Veglia		4.800
Totale auto complessivo		44.508

Tab. 2 – conteggio delle presenze auto nel periodo giugno – ottobre 2018 presso i parcheggi dell'Alpe Devero e dell'Alpe Veglia

Monitoring of tourism 2018 - 2019



Graf. 13 – mete raggiunte, Alpe Devero (n=262)



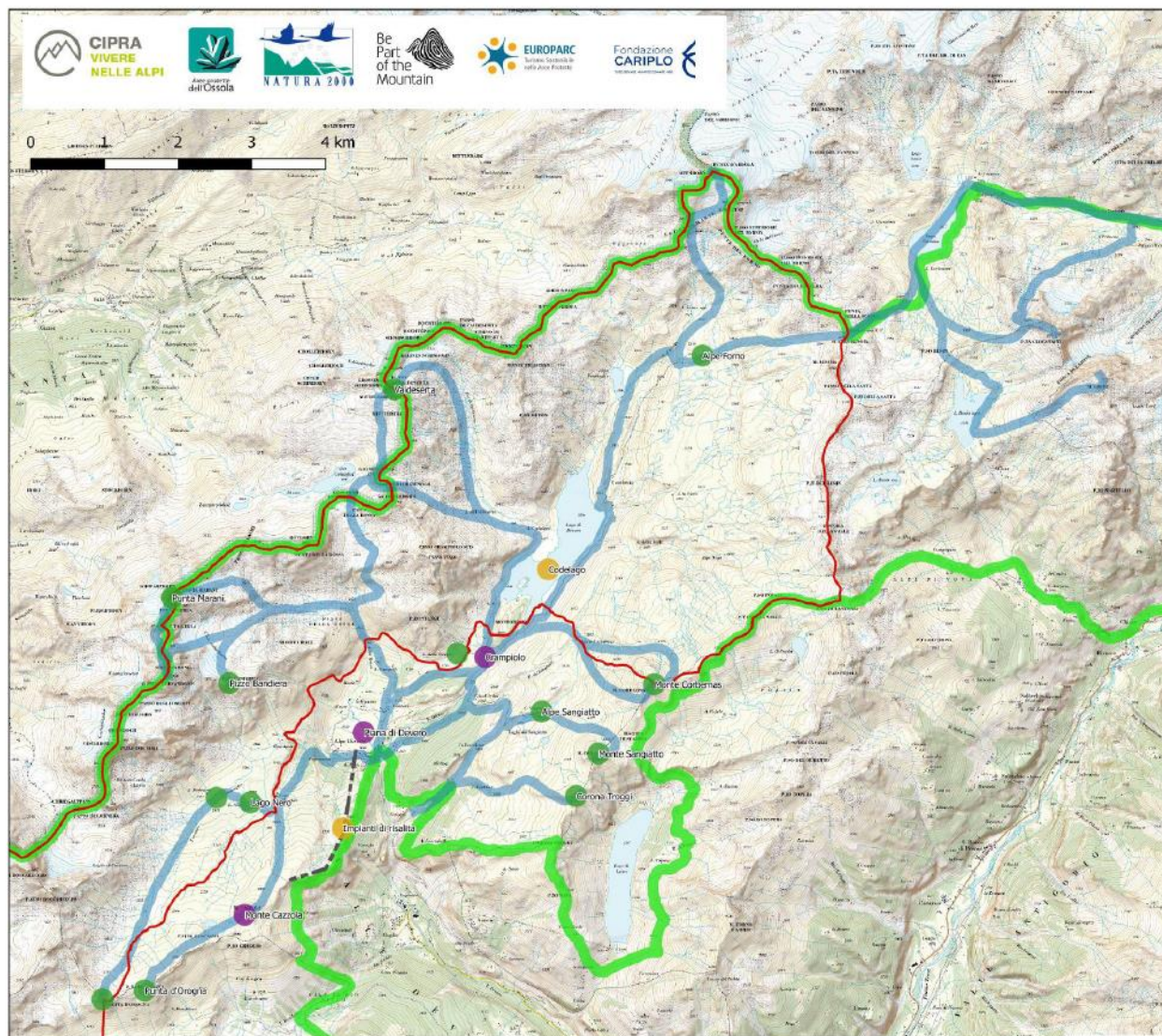
Graf. 18 – attività praticate (n=260)

Meta d'itinerario/attività praticata	Escursione a piedi	Racchette da neve	Sci alpinismo (con sci o snowboard)	Sci fuori pista/Snowboard/Freeride	Sci/snowboard in pista
Pizzo Bandiera	0,00%	4,60%	6,98%	0,00%	0,00%
Piana di Devero	40,85%	6,90%	4,65%	0,00%	0,00%
Monte Sangiatto	0,00%	6,90%	2,33%	0,00%	0,00%
Monte Cazzola	2,82%	22,99%	74,42%	100,00%	0,00%
Impianti di risalita	0,00%	0,00%	0,00%	0,00%	100,00%
Crampiole	46,48%	44,83%	2,33%	0,00%	0,00%
Corona Troggi	0,00%	1,15%	9,30%	0,00%	0,00%
Codelago	9,86%	12,64%	0,00%	0,00%	0,00%
Totale complessivo	100,00%	100,00%	100,00%	100,00%	100,00%

Tab. 5 – risposte alla domanda n° 6 per tipologia d'attività praticata

27'
Danilo Re

2023 | COGNE - GRAN PARADISO
NATIONAL PARK



Progetto RESICETS

AZIONE 1 – Preparazione, monitoraggio, raccolta delle best practices

Attività 1.2 – Monitoraggio della fruizione ex-ante

Distribuzione delle mete d'itinerario e frequentazione del territorio

Area Alpe Devero, Val Vannino
Periodo dicembre 2018 - aprile 2019

Tavola 1

Scala di rappresentazione
1:50.000

Legenda

Parco Naturale Veglia Devero e Area Contigua

■ Perimetro Sito Natura 2000 IT1140016

■ Perimetro Parco Naturale Veglia Devero

— Impianti di risalita

Mete d'itinerario rilevate durante l'attività di survey

● mete discretamente frequentate

● mete largamente frequentate

● destinazioni principali - poli attrattori

— tracciati percorsi scialp./ciaspole

Nota:

i tracciati e gli itinerari sono stati individuati e cartografati basandosi sui dati di frequentazione del territorio, sui tracciati riportati nelle guide scialpinistiche disponibili per l'area, sui tracciati resi disponibili attraverso il portale cartografico geo.admin.ch.

Hanno comunque valore puramente indicativo e possono modificarsi con i variare delle condizioni di innevamento e con le modalità di frequentazione del territorio.

Non sono in ogni caso da considerarsi come cartografia escursionistica.

Monitoring of overlaps tourism/fauna (black grouse, snow hare)

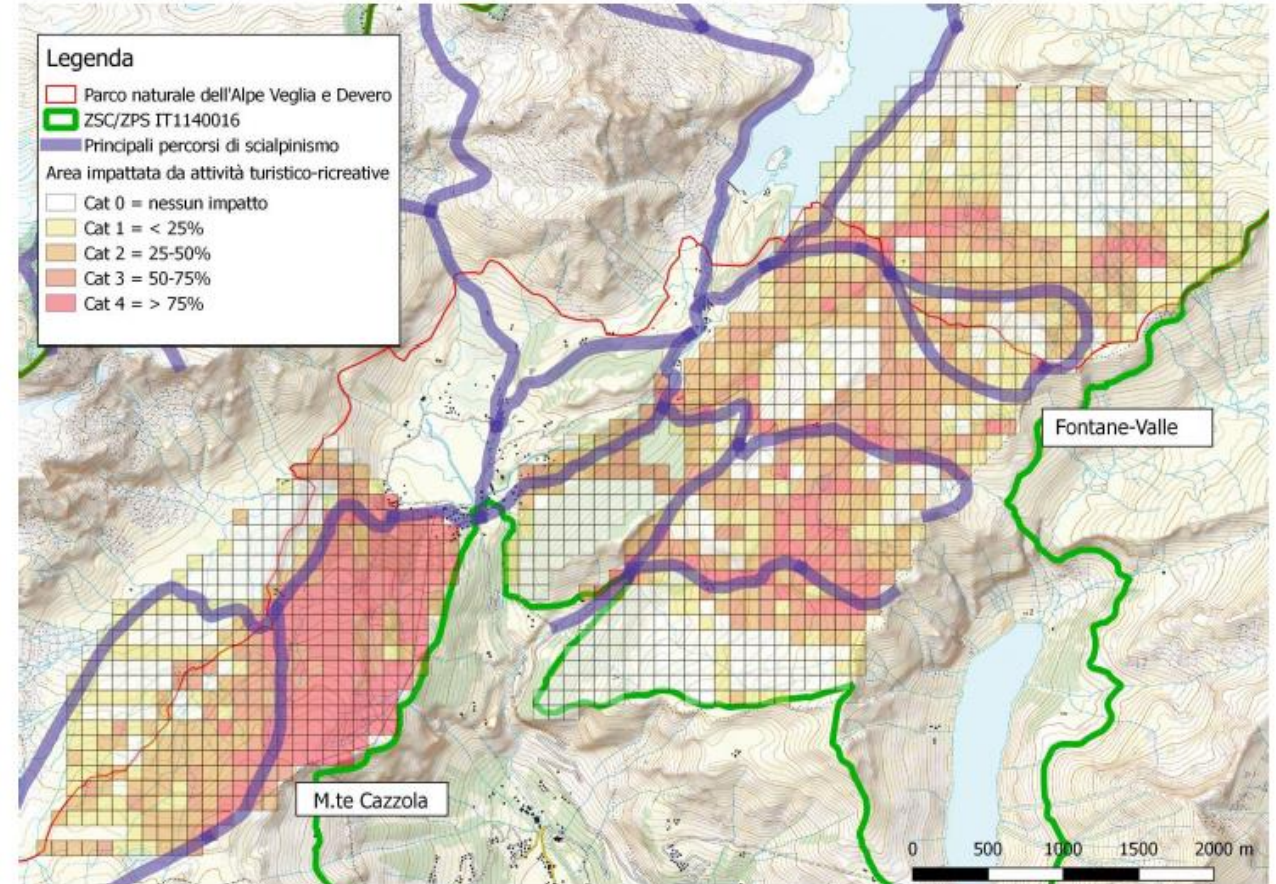
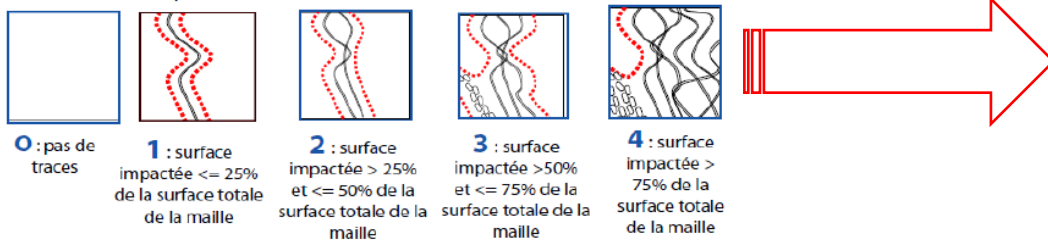


Fig. 5. Mappatura delle aree utilizzate a fini ricreativi all'alpe Devero.

27'
Danilo Re

2023 | COGNE - GRAN PARADISO
NATIONAL PARK



General communication & information

Parchi Veglia Devero Antrona - Aree Protette Ossola
16 aprile alle ore 02:14
"Proudenze, ça roucouler" è il motto della campagna portata avanti dai nostri partner Parc des Bauges

Anche il parco naturale francese sostiene il progetto #BePartoftheMountain. Da diversi anni si impegnano, insieme alle Aree Protette dell'Ossola e altri parchi europei, per proteggere il fagiano di monte, una specie emblematica della montagna in inverno e in estate.

In questo corto d'animazione di H... Altro...

Be Part of the Mountain

Muoversi consapevolmente Act responsibly

Poche e semplici attenzioni per le vostre escursioni
nella Aree Protette dell'Ossola
Few and simple attentions for your excursions
in the Protected Areas of Ossola

Come comportarsi?

- Ascolta i sentieri**
Be aware of the paths and trails.
- Cani al guinzaglio**
Keep dogs on a leash.
- Si discreto**
Be discreet.
- Informati**
Get informed.
- Stay on trails**
Stay on the recommended routes and paths.
- Dogs on a leash**
If you have dogs, it must always be kept on a leash.
- Be discreet**
Avoid disturbance by talking and shouting loudly. Avoid setting off in early morning or evening hours.
- Stay up to date**
Pay attention to the on-site signs and markings.

How to behave?

- Follow the tracks**
Stay on the recommended routes and paths.
- Respect the quiet zones**
Avoid disturbance by talking and shouting loudly.
- Be discreet**
Avoid disturbance by talking and shouting loudly.
- Stay up to date**
Pay attention to the on-site signs and markings.

Be Part of the Mountain

Neve & natura Snow & nature

Poche e semplici attenzioni per le tue attività invernali
nelle Aree Protette dell'Ossola
Hints & tips for your winter activities
in the Protected Areas of Ossola

Come comportarsi?

- Segui le tracce**
Follow the tracks.
- Rispetta le aree sensibili**
Respect the sensitive areas.
- Si discreto**
Be discreet.
- Informati**
Get informed.
- Stay up to date**
Stay up to date.

How to behave?

- Follow the tracks**
Stay on the recommended routes and paths.
- Avoid quiet zones**
Avoid disturbance by talking and shouting loudly.
- Be discreet**
Avoid disturbance by talking and shouting loudly.
- Stay up to date**
Pay attention to the on-site signs and markings.

27'

Danilo Re

2023 | COGNE - GRAN PARADISO NATIONAL PARK



General communication & information



Snow & nature

Hints & tips for your winter activities in the Protected Areas of Ossola



Winter is a fascinating season to visit the mountains: fantastic landscapes, breathtaking views and fun on the snow. And the animals? For those who stay at medium-high altitude, here come the "hard times": in addition to objective dangers (avalanches also involve animals), maintaining body temperature at vital levels despite cold, wind and snow represents a difficult challenge: only healthy and strong individuals can survive.

How to behave?



Follow the tracks

Leaving your trace in the fresh snow is a great experience but ...
... if you are not the first, follow the existing tracks! Also when riding downhill, try to reduce the spread of your traces.

Avoid quiet zones

Whenever possible, avoid ridges and other snow free areas. Forests and their edges are sensible habitats: limit your curves and stick to marked trails, visible corridors or passages.
Consider these zones while choosing and planning your tour.

Be discreet

Avoid disturbance by behaving and speaking quietly. Avoid setting out in early morning or evening hours. When you see or hear animals, stop and wait to let them escape. Observe them from a distance. If you have a dog, keep it on a leash.

Stay up to date

Pay attention to the on site signs and warnings (both general and related to specific routes and areas). Follow the Protected Areas of Ossola on social media, visit the website and subscribe to newsletters, in order to receive fresh and up-to-date information.

More info

www.areeprotetteossola.it
www.bepartofthemountain.org

Publicazione realizzata nell'ambito del progetto RESICETS, Azione 4 - Comunicazione e informazione.
Photo credits: ©Aree Protette Ossola, ©Shutterstock, ©www.bepartofthemountain.org



with the contribution of



27'

Danilo Re

2023 | COGNE - GRAN PARADISO NATIONAL PARK



Targeted communication



27'
Danilo Re

2023 | COGNE - GRAN PARADISO
NATIONAL PARK



On-site communication & information

How to behave?

General Rules and main legal prohibitions

- Dogs must be led on a leash.
- It is forbidden to light fires.
- The use of drones is prohibited.
- Free camping is forbidden (alpine bivouac is allowed, from sunset to sunrise, above the treeline).
- It is forbidden to abandon waste of any kind.

Recommendation

In addition to the General Rules, when you move across the "Quiet Zones" identified in the cartography, we recommend that you:

- Do not bring dogs into these areas.
- Follow the recommended itineraries, avoiding widening the sign of your passage, especially at the edge of the forest and in areas characterized by young forest vegetation. Do not spread your tracks, uphill and downhill!
- Avoid the areas identified on the cartography with animal symbols. These are important refuge zones!
- If you spot animals, observe them from a safe distance. Do not approach them, step past them calmly.

Attention

Mountain in winter requires experience and evaluation skills. Before an excursion, whether on foot, with skis or snowshoes, even on easy terrain, it is always necessary:

- Check the snow and weather forecasts and take into consideration the estimated avalanche danger level.
- Bring self-rescue equipment (ARTVA, shovel and probe) with you, be trained in use and provide for periodic updating.
- Keep up to date and get information on site. If necessary, consider alternative routes.

Principali percorsi per ciaspole
Main snowshoe itineraries

Principali percorsi scialpinismo
Main ski mountaineering itineraries

Parco Naturale Alpe Veglia Alpe Devero
Veglia Devero Natural Park

Aree di tranquillità
Quiet zones

RETE NATURA 2000 – NATURA 2000 NETWORK

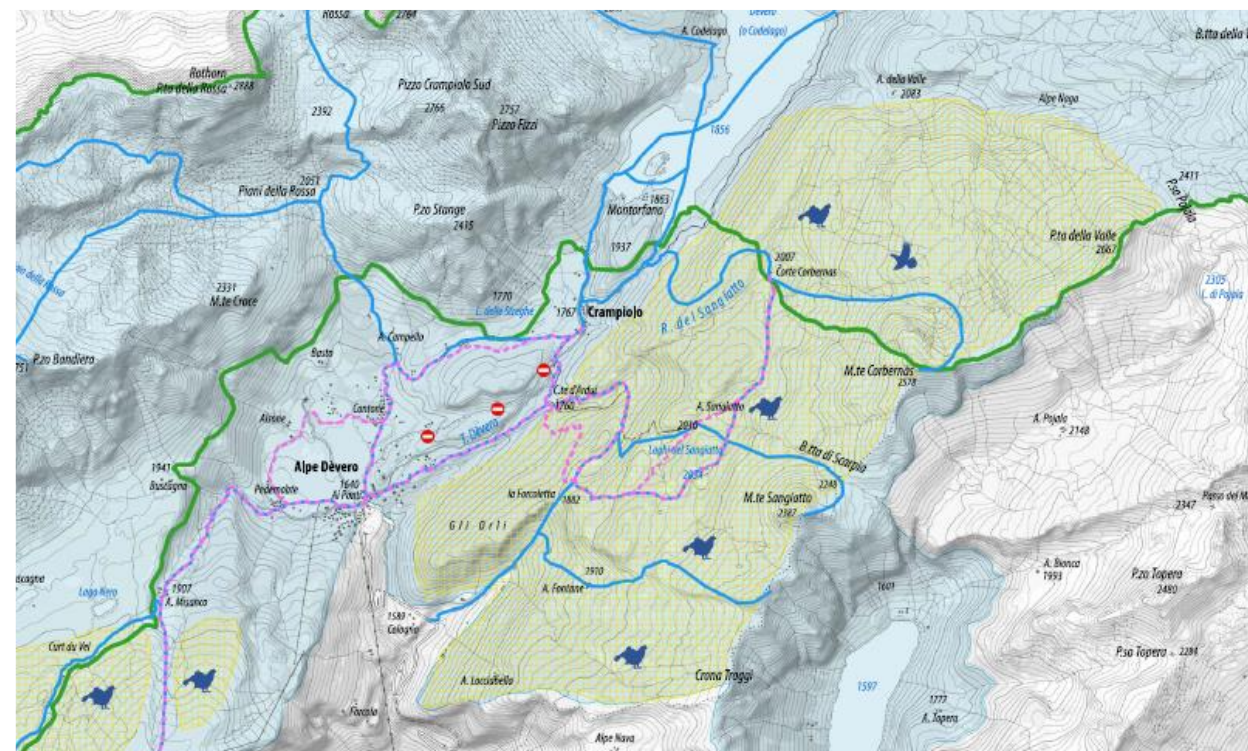
ZPS – ZSC "Alpi Veglia e Devero - Monte Giove"
SPA – SAC "Alpi Veglia e Devero - Monte Giove"

ZPS "Val Formazza"
SPA "Val Formazza"

Aree con presenza di specie sensibili
Areas with sensitive species

Fagiano di monte / *Black grouse*

Pernice bianca / *Ptarmigan*





Training

- Workshops
- Meetings
- Excursions
- Seminars & webinars

Who: Alpine Guides, Alpine Club, Tour Operators, Hotels & Huts, Associations, Trainers

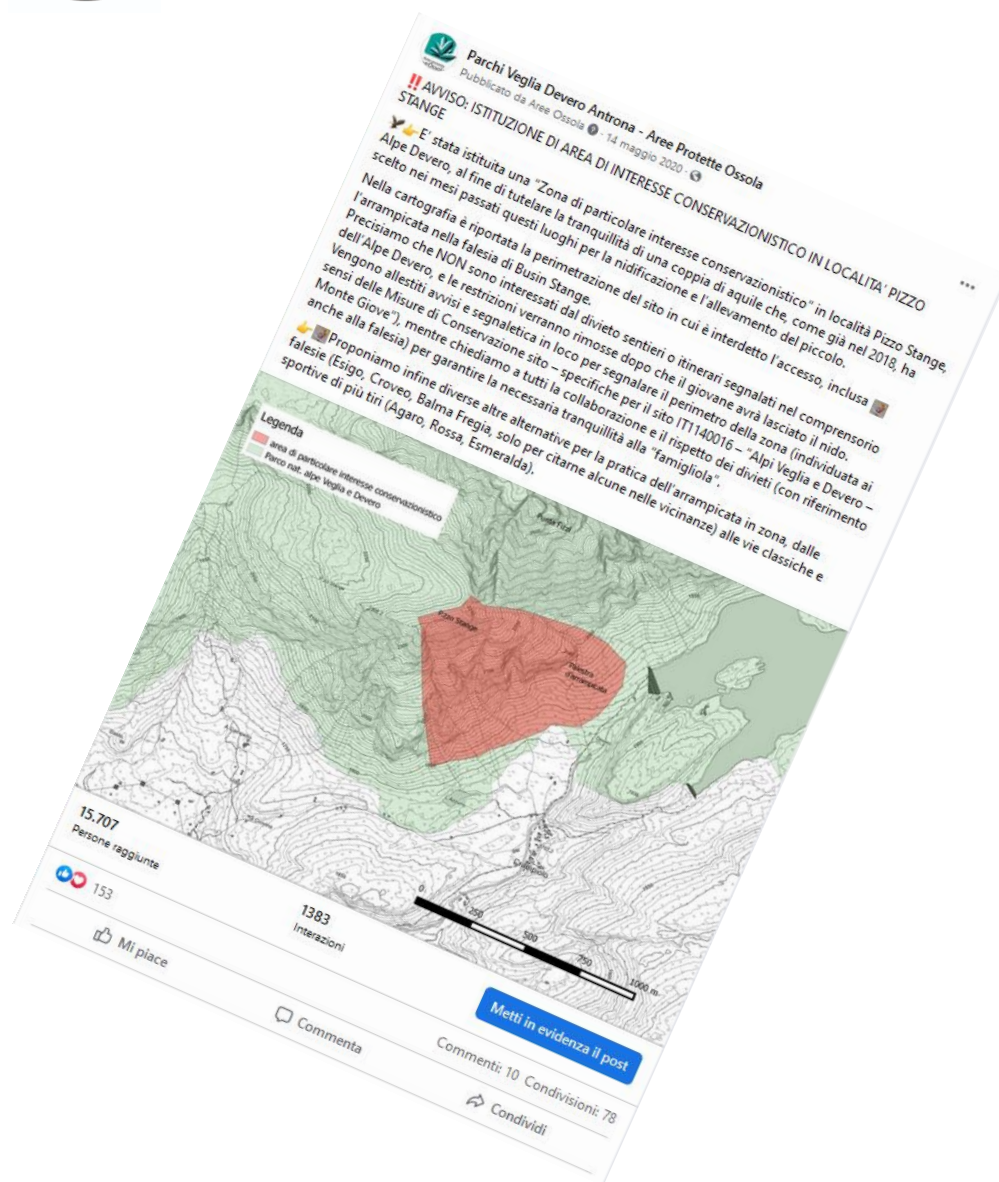




Rules & regulation

Temporarily restricted areas: golden eagle nesting site. No accesses through trails, climbing crag, ski alpinism. May to August

(Most popular and shared Facebook post in 2020/2021)





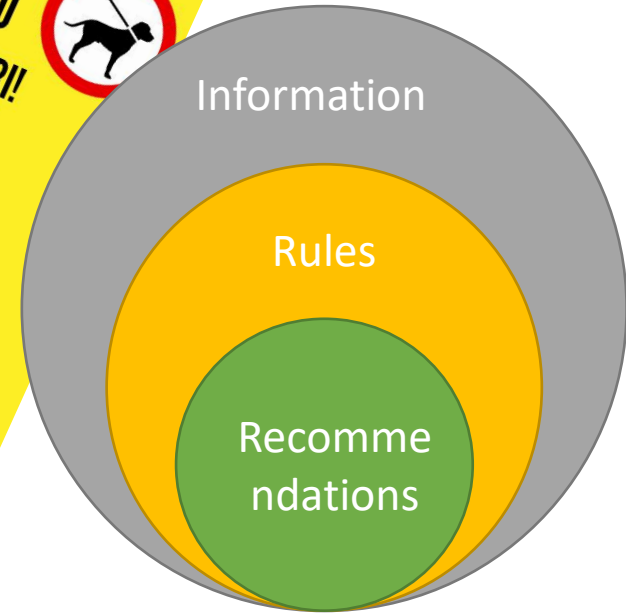
Rules, regulation and facilities

2021: Park regulation

Rules for the recreational use and of the Alpe Veglia and Alpe Devero Natural Park and the Alta Valle Antrona Natural Park.

Trails, paragliding, flight, drones and pictures, bikes and e-bikes, access to dogs and pets, camping, behavioral rules.

First identification of «**Quiet zones**» for the winter period in which, in addition to the general prohibitions, further **behavioral recommendations** are provided.





Conclusions

- **Flexible but planned approach**, objectivity, clear **cause -> effect connections**
- Information, **training and involvement**
- **Regulatory mix and recommendations**
- The stratification of borders and protection status does not help readings and understandings
- **Monitor** and evaluate the effects of measures (voluntary -> regulatory)
- **Monitor** and evaluate the changes induced in users
- Simple and clear communication
- **Time consuming activities**
- **Sharing at Alpine level**



**Thank you
for your attention!**

Daniele Piazza

E-mail me at direttore@areeprotetteossola.it

Find more at www.bepartofthemountain.org

www.areeprotetteossola.it/it/conservazione-e-ricerca/progetti-in-corso/resicets